

All in one  
ELECTRONIC (Side printing)  
TIME RECORDER/STAMP

# PIX-200

The PIX-200 is an all in one electronic time recorder/stamp designed for modern society. This top-of-the-line product can be equipped with most Amano PIX series functions that you need at a reasonable price.

The clock is great for various business applications requiring simple time and attendance clocking. As a time/date stamp and numbering machine, the small footprint uses little desk space and has a quiet operation suitable for office environment. Varieties of print formats address most every need. Ideal for banks, finance companies and government offices.

No. 101		NAME John Smith		PAY ENDING 1/22/06	
AMANO CINCINNATI, INC (800) 253-9836		WWW.AMANO.COM			
MONDAY	AM	IN	8	JAN 16	7:56
	NOON	OUT		JAN 16	12:01
	PM	IN		JAN 16	12:58
	AM	OUT	8.5	JAN 17	17:04
	PM	IN		JAN 17	7:57
	AM	OUT		JAN 17	12:04
	NOON	IN	8	JAN 17	12:56
	PM	OUT		JAN 18	7:58
	AM	IN		JAN 18	12:02
	NOON	OUT		JAN 18	12:55
	PM	IN		JAN 19	17:03
	AM	OUT		JAN 19	12:03
	NOON	IN		JAN 19	12:56
	PM	OUT		JAN 20	16:33
	AM	IN		JAN 20	7:53
	NOON	OUT		JAN 20	12:05
	PM	IN		JAN 20	12:57
	AM	OUT		JAN 20	17:02
	NOON	IN			
	PM	OUT			
	AM	IN			
	NOON	OUT			
	PM	IN			
	AM	OUT			



# PIX-200

# AMANO

## ECONOMICAL TIME RECORDER/STAMP WITH VALUABLE FEATURES AND BENEFITS

### KEY FEATURES:

- Automatic Daylight Saving Time Adjustment
- 31 Selectable preset print style: Prints year, month, day, date, hour (AM/PM or 0-23), minutes (regular, 10th, 1/100A, 1/100B(5/100)), seconds, 8-digit number and comments in various order
- 13 Selectable comments: i.e. RCVD, SENT etc. in 6 Languages ( Eng, Spa, Germ, Ita, Fre, Por)
- Programmable Customized Comment imprint (up to 3 lines)
- Prints up to eight (8) consecutive numbers with automatic reset function at a specified programmed time

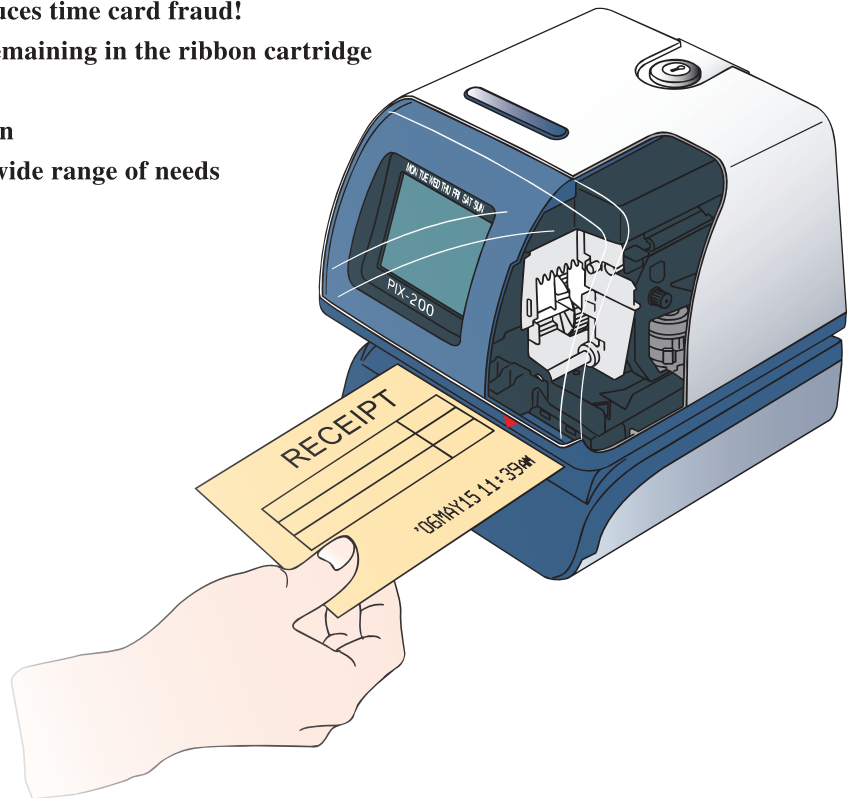
### KEY BENEFITS:

- Illuminated Print Window improves efficiency on time card stamping
- Password prevents tampering with settings – reduces time card fraud!
- Ink capacity gauge indicates the amount of ink remaining in the ribbon cartridge
- Easy-to-replace ribbon cartridge saves time
- Wall or desk mount provides for flexible operation
- Programmable print size by mm accommodates wide range of needs

### OPTIONAL FEATURES:

- Atomic/Radio controlled clock (Germany, UK)
- Full Power reserve (72 hours or 400 punches)  
Plus one of the below:
- Signal Device, 20 steps a week
- LAN Communication for NTP
- USB Communication for programming

Programmable Customized Comments  
Imprint Sample: MAY06 AM11:56 02s  
00000015 PAID  
THANK YOU



### PIX-200 SPECIFICATIONS

Printing	Dot matrix printing
Power Supply	100/120/230 VAC 50/60Hz
Operating Conditions	Temperature 14F-113F (-10 to 45°C) Humidity 10% - 90% RH(no condensation)
Dimensions	6.3"(w)x6.4"(h)x6.7"(d) (159(w)x163(h)x171(d) mm)
Clock System	Quartz oscillation system, Accuracy $\pm 3$ seconds per week (77F $\pm$ 9F) (25 $\pm$ 5°C)
Weight	4.85 lbs. (2.2 kg) (not including optional battery, AC adapter)
Memory Retention	Clock and programming data kept for 3 years without AC power



Specifications and descriptions contained in this catalog may be subject to change without notice.

Distributed by:

**AMANO Corporation**

275 MAMEDO-CHO, KOHOKU-KU, YOKOHAMA,  
JAPAN 222-8558  
TEL.+81-45-439-1508 FAX.+81-45-439-1150  
<http://www.amano.co.jp/> / English/